



**2 Bedroom
Apartment
located in
Corscombe Close,
Weymouth**

**Offers Over
£210,000**



**Roger
McGhee**
Estate Agents



PROFESSIONAL SERVICE
PERSONAL APPROACH

Flat 7, 1
Corscombe Close
Weymouth
DT4 0UH

Entrance Hallway

Wall mounted electric heater. Telephone point, security entrance phone. Two cupboards, one housing hot water tank. Doors to all rooms.

Lounge

14'7 max x 13 max
Two double glazed sliding doors to balcony, also providing views towards Radipole Lake, wall mounted storage heater.

Kitchen

11'3 max x 6 max
Range of wall and floor units with work surfaces over, inset sink unit, plumbing for washing machine. Inset hob with oven under and hood over, built in fridge/freezer. Double glazed window to side with views towards Radipole Lake.

Bedroom One

11'6 + door recess x 8'9
Irregular shaped room

Double glazed window, wall mounted electric heater. TV aerial point. Built in wardrobe. Door to:

En Suite

White suite comprising WC and wash hand basin set into vanity unit, shower cubicle. Shaver point. Tiling. Wall mounted electric heater.

Bedroom Two

11'3 x 8'8
Double glazed window with views towards Radipole Lake, wall mounted electric heater.

Bathroom

White suite comprising of low level WC, wash hand basin and . Shaver point, wall mounted electric heater. Tiling.

Outside

There is an allocated parking space.

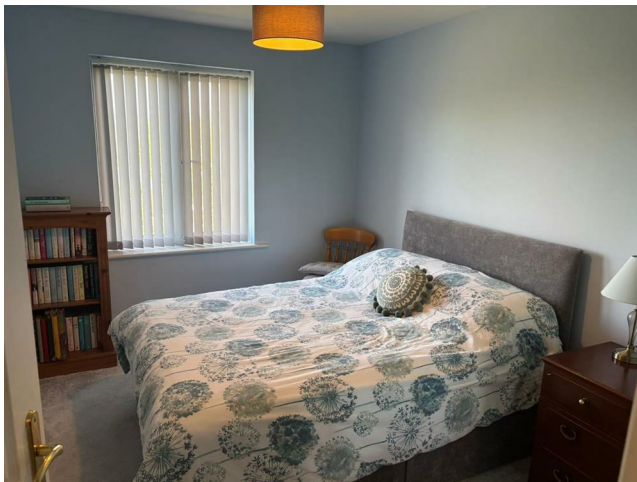
Lease Details

125 year lease from January 2003
Ground rent - £540 per year
Maintenance - £2200 per year

Agents Note

These particulars do not form part of any offer or contract and must not be relied upon as statements or representations of fact. Any areas, measurements or distances are approximate. The text, photographs, plans and measurements are for guidance only and are not necessarily comprehensive.





FIRST FLOOR

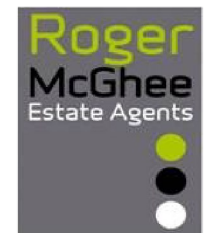
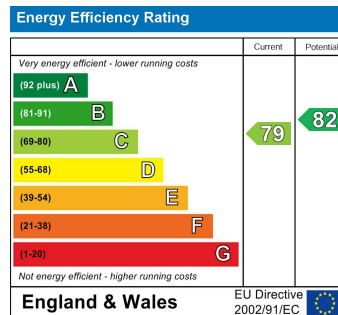


Whilst every attempt has been made to ensure the accuracy of the floorplan contained here, measurements of doors, windows, rooms and any other items are approximate and no responsibility is taken for any error, omission or mis-statement. This plan is for illustrative purposes only and should be used as such by any prospective purchaser. The services, systems and appliances shown have not been tested and no guarantee as to their operability or efficiency can be given.
Made with Metropix ©2026

CONTACT

11 Frederick Place
St Thomas Street
Weymouth
Dorset
DT4 8HQ

E: admin@rogermcghee.co.uk
T: 01305 779655
www.rogermcghee.co.uk



PROFESSIONAL SERVICE
PERSONAL APPROACH